

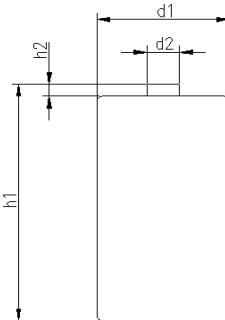
		Conditions	
cell type:		NiMH	
cell size:		C	
nominal voltage:	1.2	V	
max. charge voltage:	1.5	V	
		at standard charge (0.1C / 20°C)	
capacity			
nominal:	4500	mAh	discharge at 0.2C
minimum:	4500	mAh	discharge at 0.2C
	4200	mAh	discharge at 1C
		1.0V end discharge voltage	
		ta: 20°C	
max. continuous discharge current:	6750	mA	ta: 0...45°C
charge		current	time
standard charge:	450	mA	14...16hrs
quick charge:	1350	mA	4hrs
fast charge:	2250	mA	2.3hrs
recommended charge termination control parameters:	0...5	mV	- ΔV (-deltaV)
	0.8...1	°C	temperature rise per minute
	45...50	°C	TCO (temperature cut off)
trickle charge current:	45...150	mA	(recommended)
continuous overcharge: (less than 1 year)	≤ 450	mA	no conspicuous deformation no leakage
internal resistance: (impedance)	≤ 20	mΩ	at 1KHz battery fully charged
life expectancy:	≥ 500	cycles	acc. IEC standard
self discharge			
charge retention:	≥ 80	%	after 12 months storage at 20°C
initial capacity:	≥ 3150	mAh	within 30 days after delivery discharge at 0.2C
ambient temperature range:	0...45	°C	standard charge
	0...45	°C	discharge (≥1C)
	- 20...65	°C	discharge (<1C)
	- 20...65	°C	discharge (<1C)
	- 20...50	°C	storage (≤3months)
	- 20...40	°C	storage (≤6months)
	- 20...30	°C	storage (≤24months)

QCT1: 20/4300/20
QCT2: 30/4200/20

mechanical specifications

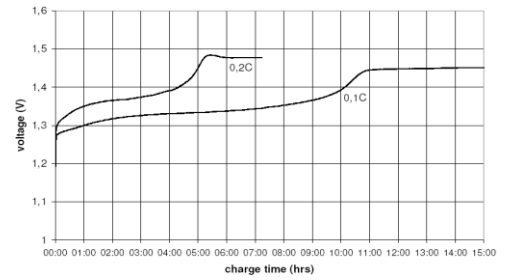
cell dimensions

diameter d1:		25.6 - 1.0	mm
diameter d2:	max.	7.5	mm
height h1:		50.0 - 2.0	mm
height h2:	min.	1.5	mm
weight:		80 ± 4	g

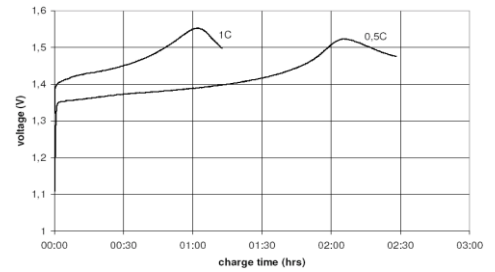


Diagrams

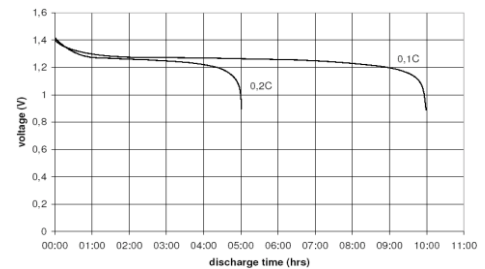
standard charge



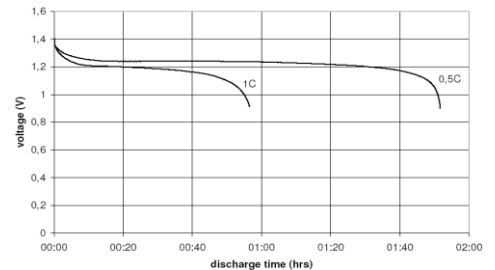
fast charge



low rate discharge



high rate discharge



ANSMANN Specifications for model:

data sheet no. / part no.	5035351
supplier no.	701364
author / date	Gramlich / 24.02.2012

C - 4500mAh low self discharge bulk package